



**Mahatma Gandhi
Cancer Hospital &
Research Institute**



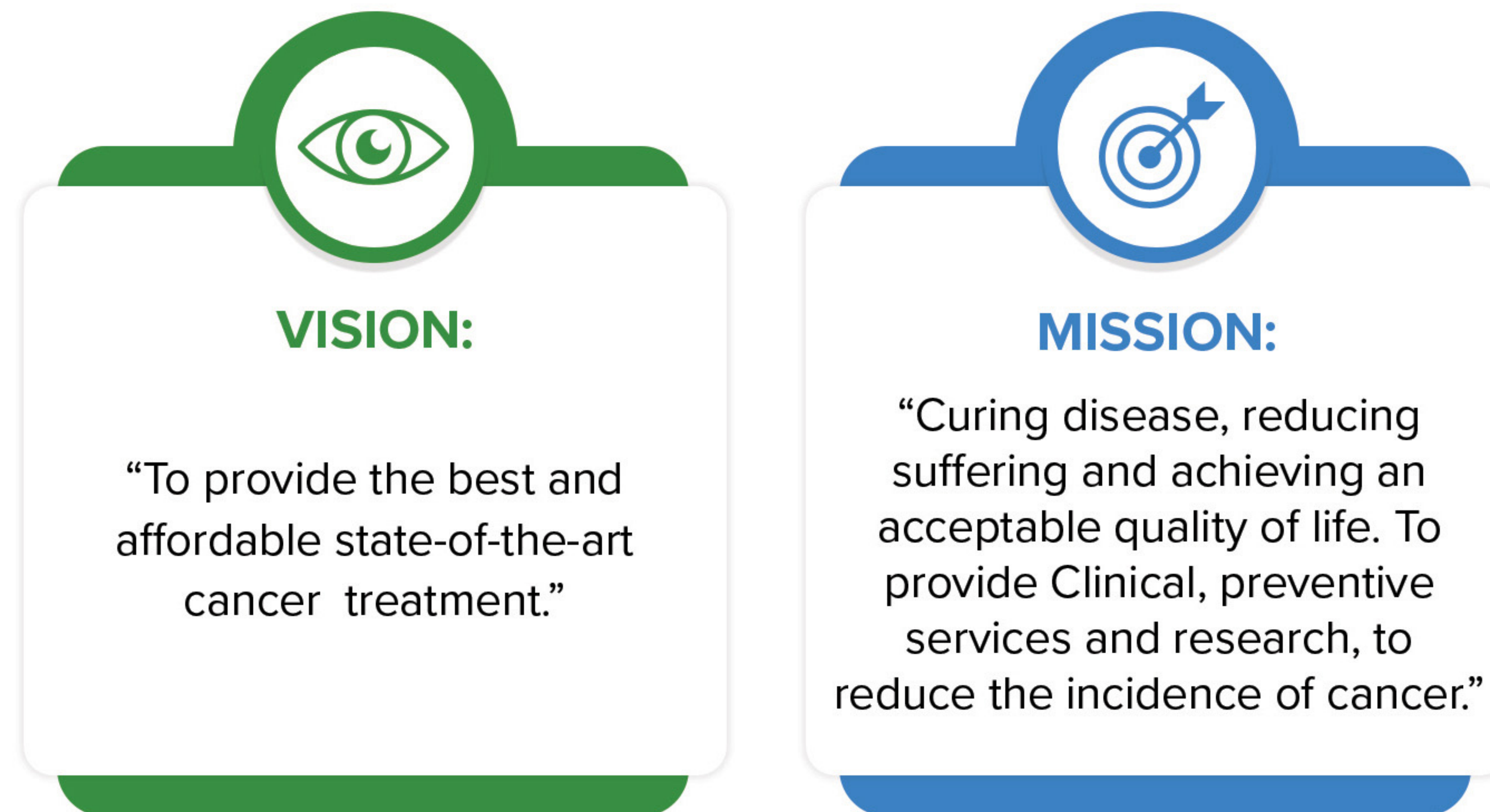
**COMPREHENSIVE, INTEGRATED CANCER
SPECIALITY HOSPITAL & POST GRADUATE
INSTITUTE OF ONCOLOGY**



THE PIONEERING STORY

Mahatma Gandhi Cancer Hospital & Research Institute, Visakhapatnam has taken the name and style from a transformed Vizag Cancer Hospital in 2005. With 20 years of dedicated Cancer care excellence, Mahatma Gandhi Cancer Hospital & Research Institute is the Largest Comprehensive, Exclusive Cancer Super Specialty Hospital in the States of Andhra Pradesh, Odisha, and Chhattisgarh with the largest qualified team of Cancer Super Specialists hailing from various premier institutions of India. Dr. Murali Krishna Vonna & team have established the institute to deliver the finest patient experience possible providing high-value cancer treatment at affordable price. The faith and trust reposed by the people in the hospital is constantly spreading to all corners of the country and beyond.

VISION & MISSION



CANCER CARE THAT’S TRULY WORLD-CLASS

The hospital has a vision to achieve the highest standards of cancer treatment for all types of patients at the best and affordable prices. The hospital has had a very humble beginning and its perseverance and commitment towards excellence has helped attain great heights in every type of cancer treatment method which is present in the world today.

Mahatma Gandhi Cancer Hospital & Research Institute is a centre of excellence for Comprehensive Cancer Care. It is NABH accredited, DNB accredited largest teaching cancer hospital serving this region since 20 years and treated over 2,00,000 cancer patients. This institute delivers cancer care services with state-of-the-art technology equipment like Two Triple Energy Linear Accelerators (with V-MAT, SRS, SRT, TBI capabilities), Ray Station (The India's first "Adaptive Radiotherapy Treatment Planning System"), 40 Channel HDR Brachytherapy, Time of Flight PET CT Scan, da Vinci Robotic Surgical System, Bone Marrow Transplant Unit for Hematopoietic Stem Cell Transplant Therapy for benign and Oncological conditions, Nuclear therapy state of the art diagnostics technology which include 3D Tomosynthesis, Fluorescence imaging, Spiral CT scan, Color Doppler, and modern diagnostic laboratory including frozen section, AI Based Screening devices.

UNPARALLELED EXPERTISE IN MODERN CANCER CARE

Mahatma Gandhi Cancer Hospital & Research Institute is the only hospital having all major cancer care related departments in this region. In fact this hospital has the highest number of qualified cancer specialists, subspeciality working full time under one roof possessing credentials from premier oncology education institutions of India like Cancer Institute (Adyar), Tata Memorial Hospital (Mumbai), Christian Medical college (Vellore), & AIIMS (Delhi) etc. The Comprehensive Cancer-Care includes services ranging from raising cancer awareness, early detection through the evidence - based treatment to rehabilitation and palliative care.

This hospital is the FIRST in the State of Andhra Pradesh have treated more than **2,00,000+ Cancer patients till now which includes 20,000+ Complex Onco Surgeries, 30,000+ Radio therapies, 20,000+ Brachy therapies, 1,50,000+ Chemotherapies, 400+ Robotic Cancer Surgeries, 200+ BMTs and 200+ SRS & SRT procedures.** The hospital conducts CMEs (Continuous Medical Education) on a regular basis for the benefit of healthcare professionals in this region in the fields of Cancer-Care covering recent innovations in treatment methods and advanced technologies. Cancer awareness sessions are also conducted for general public, students and employees of public, private and government organizations on various platforms to educate the importance of early screening and diagnosis. Till date, hospital has conducted 2000+ free health screening camps, 1000+ Cancer Awareness Programmes and 200+ Professional Education Programmes. The hospital is empanelled under various public, private and government organizations and major health insurance companies. The hospital is also empaneled with state government sponsored schemes like **Aarogyasri scheme of Andhra Pradesh and Gopabandhu Jan Arogya Yojana (GJAY), Ayushman Bharat, Including Andhra Pradesh, Odisha, Andaman and Nicobar Islands, Chhattisgarh, Jharkhand .**

As a part of continuous effort to keep the people aware and alert towards the healthy-living, the hospital conducts events that encourage enthusiastic participation from the employees and general public on recognizable days like No-Tobacco-Day, Cancer-Survivors-Day, World-Cancer Day and many more.



daVinci Robotic Surgical System



BMT (Bone Marrow Transplant) Unit



Linac Adaptive Radiotherapy

CONTINUOUS UPGRADATION TO DELIVER EXCELLENCE IN SERVICE

Mahatma Gandhi Cancer Hospital & Research Institute provides Cancer-Care services with the help of state-of-the-art technology equipment like Two Triple Energy Linear Accelerators (V-MAT technology) and **Ray Station The India's first "Adaptive Radiotherapy"** treatment planning system to reduce the side effects). This institution is known for its **"Heart Sparing Radiotherapy in treating tumors near the heart like left side Breast Cancer with Respiratory Gating (ABC)**. HDR 40 Channel Brachytherapy to deliver conventional **RT, 3DCRT, IMRT, IGRT (VMAT), SRS, SRT, SBRT , TBI** and Robotic 6D treatment & Image Guided Brachytherapy. These advanced treatments are ably supported by advanced diagnostics like **Time-of-Flight PET CT**, multi-slice CT with Moving Lasers, Ultrasound with Color Doppler, Modern Diagnostic Laboratory & Ultra-Modern Operation Theatres. The nuclear medicine department has been equipped with TOF PET-CT & Gallium generator to perform PSMA PET. The hospital is the **FIRST and ONLY** hospital in the state of Andhra Pradesh to provide such Nuclear therapy services.

The hospital is the first in the state of Andhra Pradesh to introduce **da Vinci Robotic Surgical System** that helps in performing minimally invasive surgery causing minimum or no discomfort during and after the surgery and **Full Field Digital Mammography With 3D Tomosynthesis and Stereotactic Guided Vacuum Assisted Breast Biopsy** (First unit in the states of AP & Telangana), & that helps in accurate and early detection of breast cancer. The hospital had **BMT (Bone Marrow Transplant)** services. In both oncological & non oncological conditions. All these new service additions make this hospital as the **FIRST** such hospital to introduce any of these services.

The hospital has 24 hours Pharmacy, Laboratory and Ambulance services too.

GAINING THE ACADEMIC LEARNING INSTITUTE STATUS

The hospital has been accredited by NBE (National Board of Examinations) to provide DNB courses and training in Surgical- Oncology, Medical Oncology (Super Specialty) and Radiotherapy (Post-MBBS, Post- doctoral fellowship) that helps enhance the availability of expertise of Cancer-Care. Also our academic institution has become renowned which trains future generations of oncology.

MGCH&RI is authorized by NTR University of Health Sciences, Vijayawada for the post graduate diploma doctors in the specialty of Anaesthesia for the course Post-Doctoral Fellowship in Pain & Palliative Care.

USHERING GROUND BREAKING RESEARCH Mahatma Gandhi Cancer Hospital & Research Institute began its Clinical Research Department in the year 2005. During the time, research activities at this institute had emphasized on the understanding of the biology of cancer; today, the research wing at MGCH&RI has reorganized its infrastructure both for basic and clinical research to include need-based contemporary as well as futuristic research areas. A blend of basic, translational as well as Clinical research is going on. Apart from the research the Institute empowers many students from GITAM university, Andhra University & many other private research organizations with the facilitation of their Research.



SERVING THE SOCIETY WITH HUMILITY & RESPONSIBILITY

Mahatma Gandhi Cancer Hospital & Research Institute conducts regular free cancer screening camps using AI-based screening devices through its rural outreach program. Till now, the hospital has conducted over **2,000** screening camps and screened a total of **200,000** individuals, among them **200+** were identified as positive cases and they got treated at hospital.



iBreastExam



VEL Scope



Smart Scope

More than 2000 Camps | More than 2,00,000 Screenings





The hospital has been closely associated with 'Shreya Cancer Foundation' a non-profit, charitable organization to provide medical relief and welfare to the poor and needy, especially in treatment of cancer and carrying out research activities pertaining to cancer treatment.



MARCHING AHEAD WITH WELFARE ACTIVITIES (CSR)

The hospital also participates in various welfare activities like providing safe drinking water in the neighbourhoods and adopting education of underprivileged children, providing free accommodation to the needy people who are suffering with the disease under the umbrella of CSR (Corporate Social Responsibility). The Hospital organizes awareness sessions on Health, preventive health checkup in rural areas and in schools where we conduct a mass drive on HPV vaccination etc.



OUR EARNEST SUPPORT WITH EMPANELMENT

The following organisations have been empanelled with the hospital for healthcare of their employees & their dependents.

Corporates List

- Airport Authority of India
- AP GENCO
- AP Transco
- APEPDCL
- Arogya Bhadratha Scheme **(ABS)**
- Arogya Sahayatha **(AS)**
- Bharat Heavy Elctricals Limited **(BHEL)**
- Bharath Dynamic Limited
- Biju Swasthya Kalyan Yojana **(BSKY)**
- **BSNL** (Bharat Sanchar Nigam Limited)
- Indian Institute of Petroleum & Energy **(IIPPE)**
- Central Govt Employees Health Scheme **(CGHS)**
- Central Armed Police Forces **(CAPF)**
- Chief Minister Relief Fund **(CMRF)**
- Coal India Limited **(CIF)**
- Dr. YSR Arogyasri Health Care Trust, WJHS, ARHS, Aarogya Raksha, AHS
- Dredging Corporation of India Ltd
- East Cost Railway **(ECR)** Eastern Naval Command **(ENC)** (Naval Dock Yard, fleet Maintenance Unit, MOV, Naval Armament Depot, INS CIRCAR, INS Sata-vahana, INS DEGA, INS EKSILA, CTW, HQ ENC)
- **EHS** (Employee Health Scheme)
- **ESI** (Odisha)
- EX Servicemen Contributory Health Scheme **(ECHS)**
- Food Corporation of India
- Hindustan Aeronautics Limited **(HAL)**
- Hinudstan Petroleum Corporation Ltd **(HPCL)**
- INCOME TAX Department, GOI
- Indian Oil Corporation Limited **(IOCL)**
- **MES** (Military Engineer Services)
- National Aluminium Company Limited **(NALCO)**
- National Institute of Oceanography **(NIO)**
- Naval Science and Technologies Laboratory **(NSTL)**
- NMDC
- Oil and Natural Gas Corporation Limited **(ONGC)**
- PMJAY - AYUSHMAN BHARAT
- SHIP BUILDING CENTRE **(SBC)**
- South Central Railway **(SCR)**
- Paradip Port Authority
- MMTC limited
- State Bank of India
- Visakhapatnam Steel Plant **(VSP)**
- Visakhapatnma Port Trust **(VPT)**

Insurance/TPA's

- Aditya Birla Health Insurance
- Apollo DKV
- Bajaj Allianz Life Insurance
- Cholamandalam Ms General Insurance Company Ltd.
- Dedicate Health Insurance - DHS
- E Meditek TPA Ltd.
- East West Insurance
- Edelweiss GIC Ltd.
- Ericson Insurance TPA Pvt. Ltd.
- Family Health Plan Insurance TPA Ltd.
- Future Generali India Insurance Co. Ltd.
- Genins India Insurance Ltd.
- Go Digit General Insurance Limited
- Good Health Plan Limited
- HDFC Ergo General Insurance Company Ltd.
- Health Insurance TPA of India Ltd.
- Heritage Health Tpa Pvt. Ltd.
- ICICI Lombard
- ICICI Prudential Life Insurance
- IFFCO Tokio General Insurance Company Limited
- Kotak Mahindra Gic Ltd.
- Liberty Gic Ltd. Magma Hdi Gic Ltd.
- Manipal Cigna Hic Ltd.
- Max Bupa Health Insurance Company Limited
- Md India Healthcare Services TPA Pvt. Ltd.
- Medi Assist India TPA Pvt. Ltd.
- Medi Care TPA Medsave Health Insurance Ltd.
- Navi Gic Ltd (dhfl Gic Ltd)
- Niva Bupa Health Insurance Company Limited
- Paramount Health Services TPA Pvt. Ltd.
- Raheja Qbe General Insurance Co. Ltd.
- Raksha TPA Pvt Reliance General Insurance
- Reliance Health Insurance Ltd.
- Safeway Insurance TPA Pvt. Ltd.
- Samkrp Pistons And Rings Limited
- SBI General Insurance
- Star Health Insurance
- TATA Aig General Insurance
- Unitedhealthcare Parekh Insurance TPA Pvt. Ltd.
- Universal Sompo General Insurance Company Limited
- Vidal Health Insurance TPA Pvt. Ltd.
- Vipul Medcorp Insurance TPA Private
- Limited Vision Digital Insurance Pvt. Ltd.

CENTER OF EXCELLENCE IN SURGICAL ONCOLOGY

PERFORM OVER 20000+
COMPLEX ONCO SURGERIES



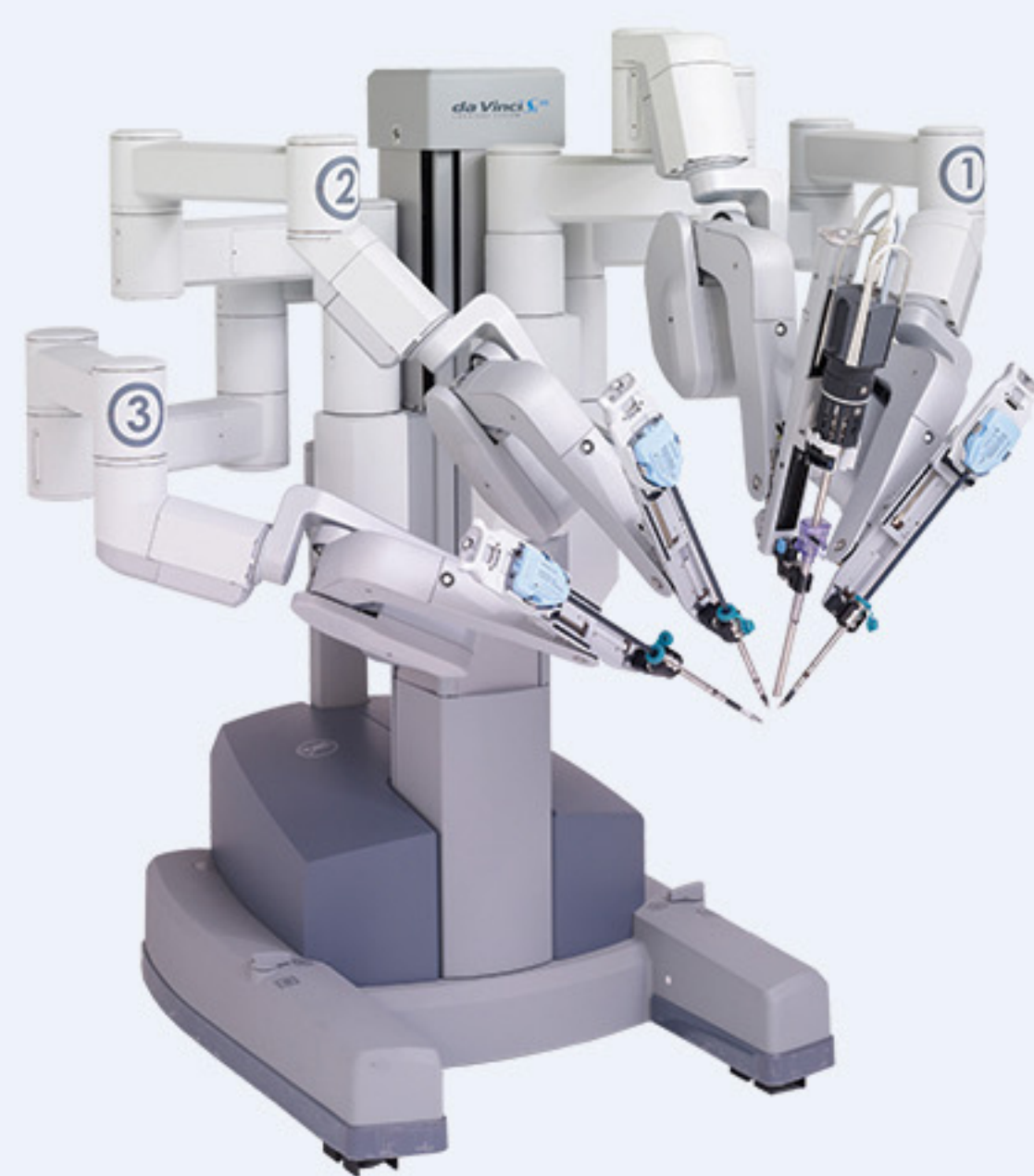
- State of the art modular Operation theaters with hepa-filters
- Robotic Surgical System
- HIPEC Surgery
- High Dependency Unit
- Skull Base Surgery
- Ultra Radical Salvage surgeries
- Limb Salvage Surgery & Extra corporeal Radiotherapy
- Plastic and Micro Vascular Reconstruction
- Hyperthermic Intraperitoneal Chemotherapy
- Onco Plastic Surgeries
- Sentinel Lymph Node (SLN) Biopsy & ICG
- High Definition advanced laparoscopic unit
- Intensive Therapy Unit for post-operative care and other emergencies of the patients
- Head & Neck Surgery
- Breast Surgery
- Uro Oncology Surgery
- Gynaec Surgery
- Gastrointestinal (GI) Surgery
- Hepato Pancreatic Biliary (HPB) Surgery
- Thoracic Surgery
- Neuro Surgery
- Reconstructive Surgery
- Orthopedic Surgery
- Endocrine Surgery
- Pediatric Surgery
- Palliative Surgery
- Melanoma Surgery
- Sarcoma Surgery

ROBOTIC SURGICAL SYSTEM SUNRISE INSTITUTE OF ROBOTIC SURGERY (SRIRS)



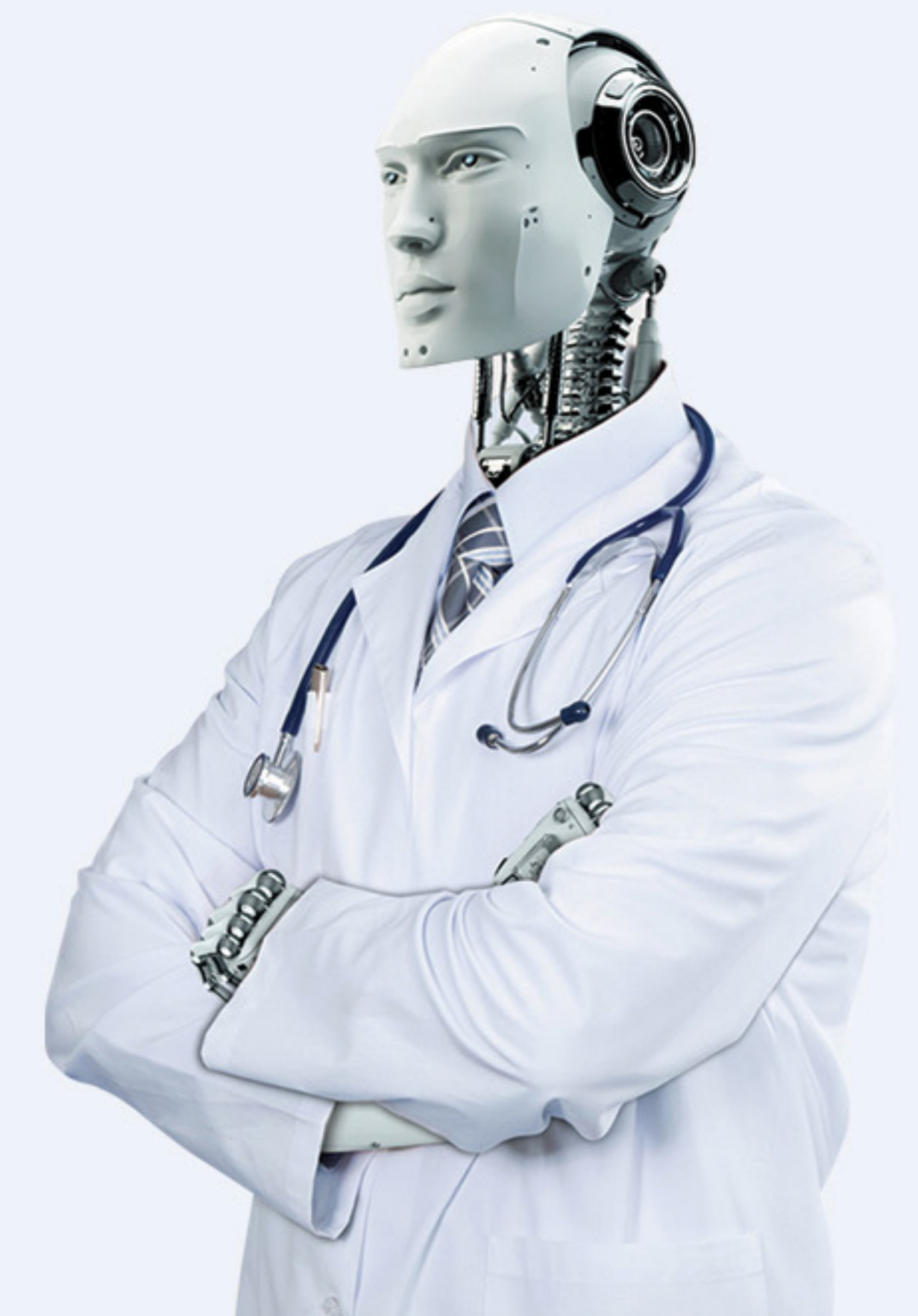
A MULTI-DISCIPLINARY ROBOTICS PROGRAM

Oncology Surgery | Gynecology Surgery | Urology Surgery
Colorectal Surgery | Gastrointestinal Surgery | General Surgery
Thoracic Surgery | Bariatric Surgery | Head & Neck Surgery



Potential Benefits Of Robotic Surgical System

- High Precision
- Minimal Incision
- Minimal Blood Loss
- Faster Recovery
- Less Pill Burden
- Minimal Pain
- Minimal Scarring
- Minimal Hospital Stay
- Lower Risk of Infection
- Lower Risk of Complications



SUCCESSFULLY COMPLETED 400+ ROBOTIC SURGERIES

CENTER OF EXCELLENCE IN HEAD & NECK CANCERS



- Ultra Radical Resections of Head & Neck Cancers
- Craniofacial Resections
- Microvascular Reconstructions
- Salvage Surgeries
- Trans Oral Robotic Surgery (TORS)
- Organ Saving Advanced Radio therapy Techniques (IMRT, VMAT)
- Reirradiation (SRS, SRT, SBRT)
- Interstitial Radiotherapy
- Chemotherapy
- Immunotherapy
- Speech & Swallowing Therapy
- Prosthetics
- Xerostomia Management
- Osteoradionecrosis Management (ORN)
- Deaddiction Clinic
- Frozen Section
- Ocular Oncology
- Voice Prosthesis
- Pain & Palliative Care
- Trigeminal Neuralgia Management
- Clinical Trials

CENTER OF EXCELLENCE IN BREAST CANCERS



Everything is Sharper and Clearer in 3D Full Field Digital Mammogram with 3D Tomosynthesis

- 3-D Mammography
- Vacuum Assisted Biopsy (VAB)
- Stereotactic Biopsy
- Computer Aided Diagnosis
- Sentinel Node Biopsy
- Breast Conservative Surgery & Oncoplastic Surgery
- Frozen Section
- Precision Radiotherapy
- DIBH-Heart Sparing Radiotherapy
- Interstitial Radiotherapy
- Immunotherapy and Precision Medicine
- Clinical Trials

The Power & Promise Of 3D Mammography

Interventional Radiology in Mammography:

- Full Field Digital Mammogram with 3D Tomosynthesis & CAD
- Stereotactic Guided Needle Core Breast Biopsy
- Stereotactic guided vacuum assisted breast biopsy with mammogram/USG
- Stereotactic Guided Wire Localization

CENTER OF EXCELLENCE IN GYNAEC CANCERS



- Digital Colposcopy
- Open / Lap / Robotic Radical Surgical Procedures
- Ultra Radical Salvage Surgeries
- Hyperthermic Intraperitoneal Chemotherapy
- Advanced Radiation Technologies like VMAT, IMRT
- Image Guided Brachytherapy

- Chemotherapy
- Immunotherapy/Precision Medicine
- Sentinel Node Biospy
- Stoma Care
- Clinical Trials

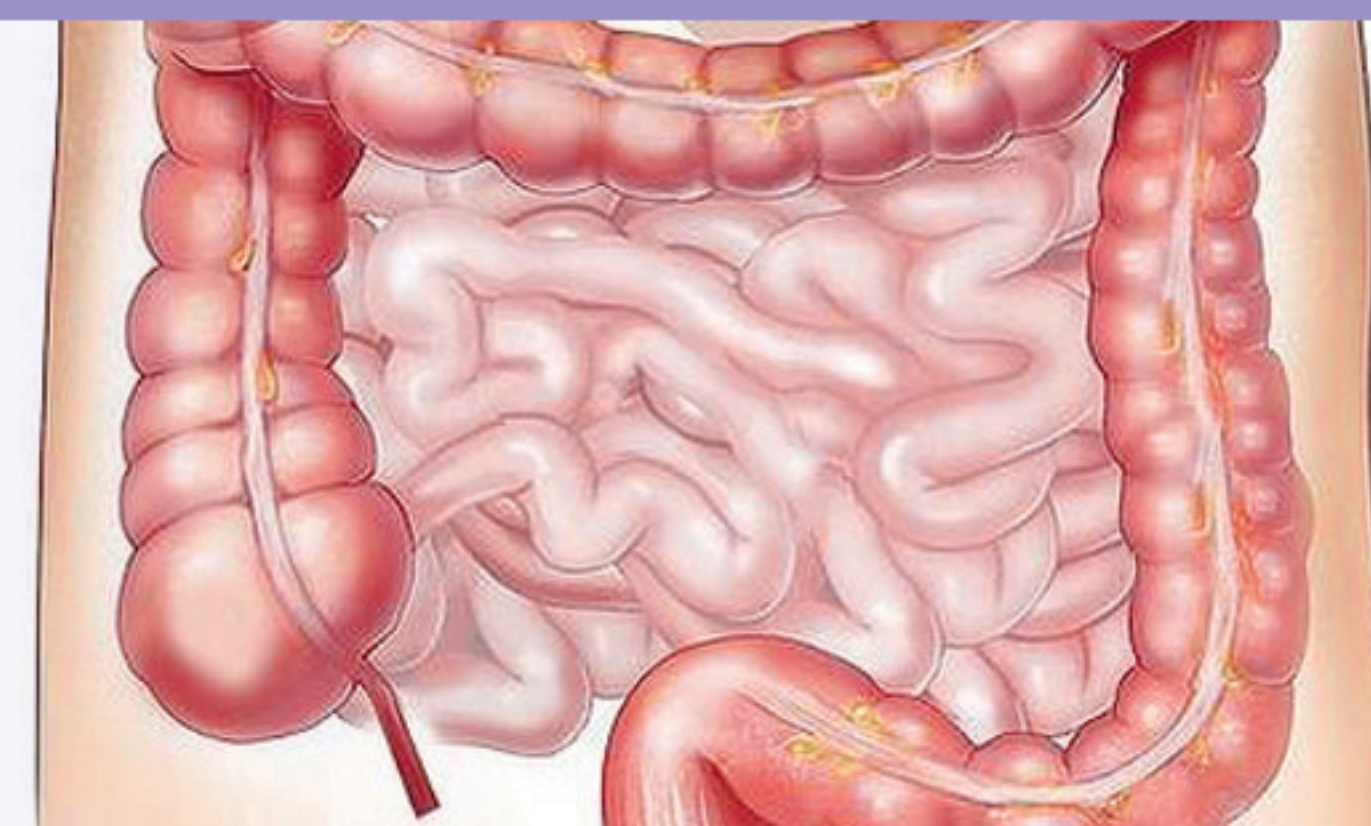
CENTER OF EXCELLENCE IN THORACIC MALIGNANCIES



- Open / VATS / Robotic Lobectomy
- Robotic Esophagectomy
- EBUS
- Precision Medicine

- Immunotherapy
- SBRT with 4D Motion Management with Symmetry
- Trans Bronchial Intraluminal Radiotherapy
- Clinical Trials

CENTER OF EXCELLENCE IN GASTROINTESTINAL CANCERS



- Open / Lap / Robotic Surgeries Endoscopy services
- Hyperthermic Intraperitoneal Chemotherapy (HIPEC) Surgery
- Ultra Radical Surgeries (Liver, Pancreas, Esophagus)
- Sphincter Saving Surgeries for Rectal Cancers
- Advanced Radiotherapy Technologies like IMRT, VMAT, SBRT

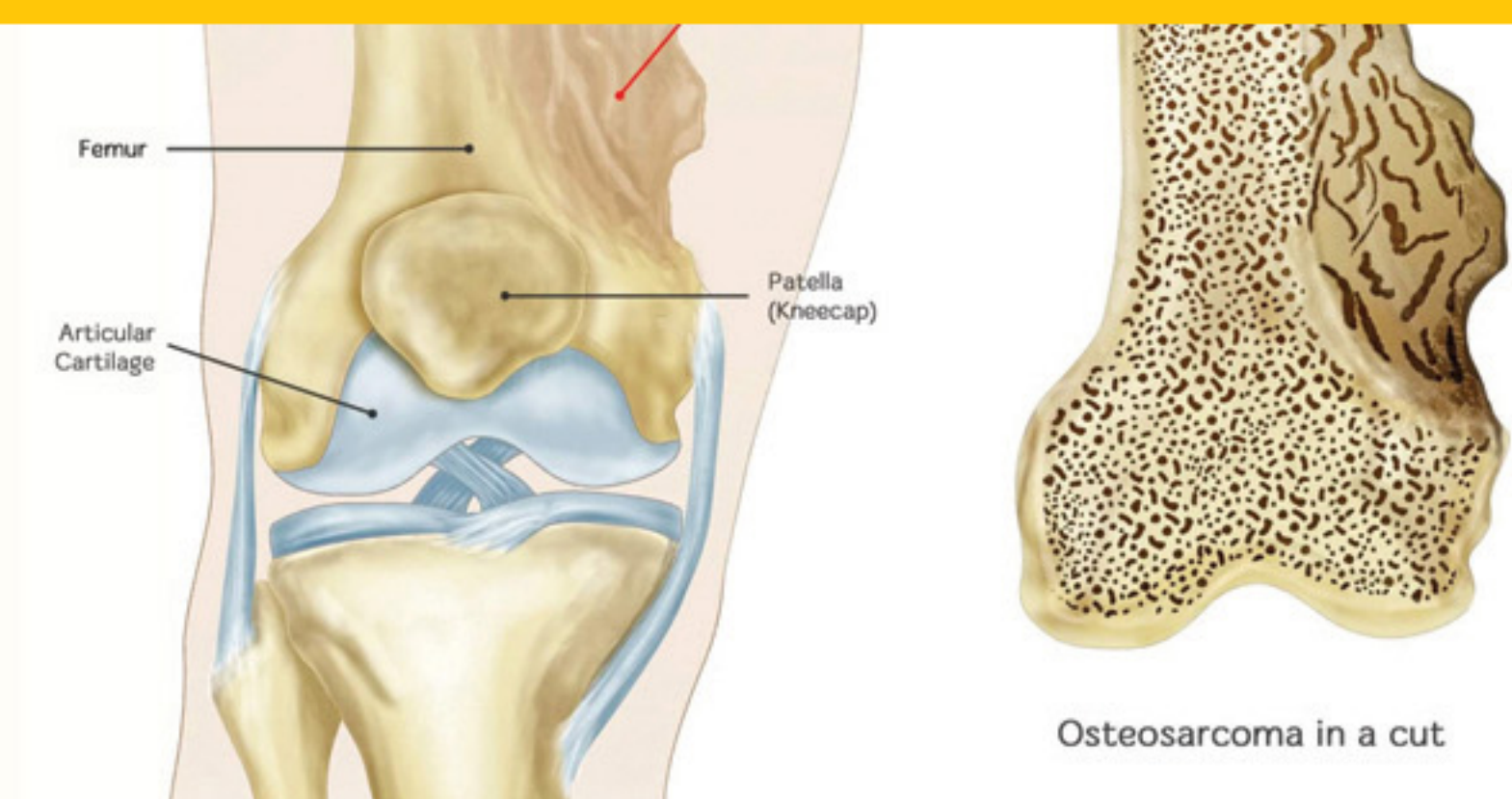
- Radio Frequency Ablation
- ABC for SBRT for Liver Lesions
- Palliative Interventional Procedures
- Immunotherapy
- Clinical Trials

CENTER OF EXCELLENCE IN URO-ONCOLOGY



- Robotic Nephron Sparing Surgery for Kidney Cancer
- 3D Imaging & AI in Kidney Cancer
- Radical Cystoprostatectomy with Ileal Neobladder (Internal Bladder reconstruction)
- Transurethral Procedures like Radical TURBT & TURP
- PSMA PET Scan for Advanced Prostate Cancer
- Robotic Procedure for Prostate Cancer, Bladder Cancer & Kidney Cancer
- Penile Preserving Procedures in Penile Cancer
- Advanced Radiotherapy Technologies like IMRT, VMAT, SBRT
- Stoma Clinic
- PSMA Lutetium Therapy for Metastatic Disease
- Immunotherapy

CENTER OF EXCELLENCE IN BONE AND SOFT TISSUE TUMORS



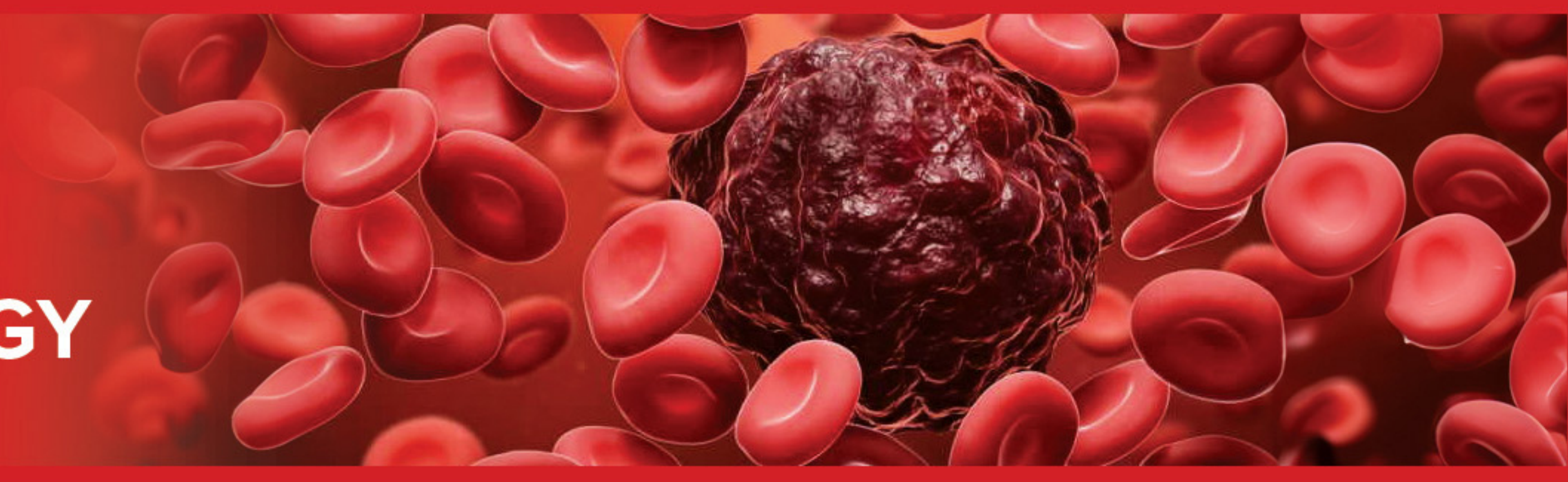
- Ultra Radical Resections
- Limb salvage surgeries with custom made prosthesis
- Micro vascular reconstruction
- Intra arterial chemotherapy
- Advanced Radiotherapy technologies
 - IMRT
 - IGRT
 - Interstitial Radiotherapy
- Pediatric Oncology
- Precision Medicine
- Clinical Trials

CENTER OF EXCELLENCE IN MEDICAL ONCOLOGY



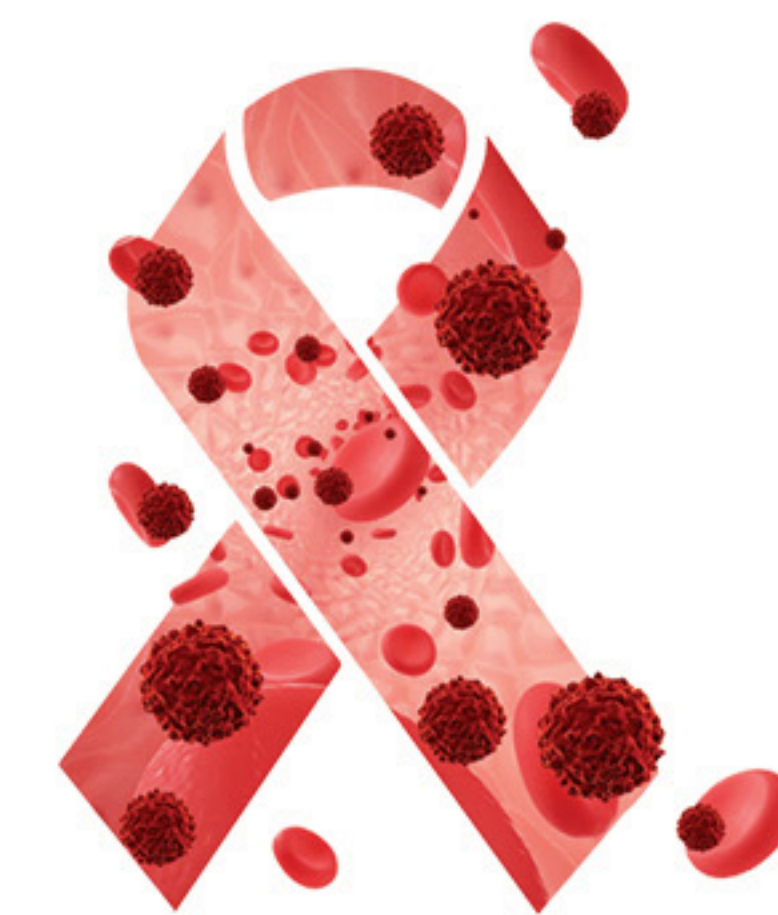
- Chemotherapy
- Molecular Oncology
- Targeted Therapy
- Immunotherapy
- Precision Medicine
- Stem Cell Transplantation
- Cellular Therapy
- Bone Marrow Transplantation (BMT)
- Solid Tumors
- Haemato Oncology
- Paediatric Oncology
- Scalp Cooling System
- Clinical Trials

CENTER OF EXCELLENCE IN HEMATOLOGY & HEMATO ONCOLOGY



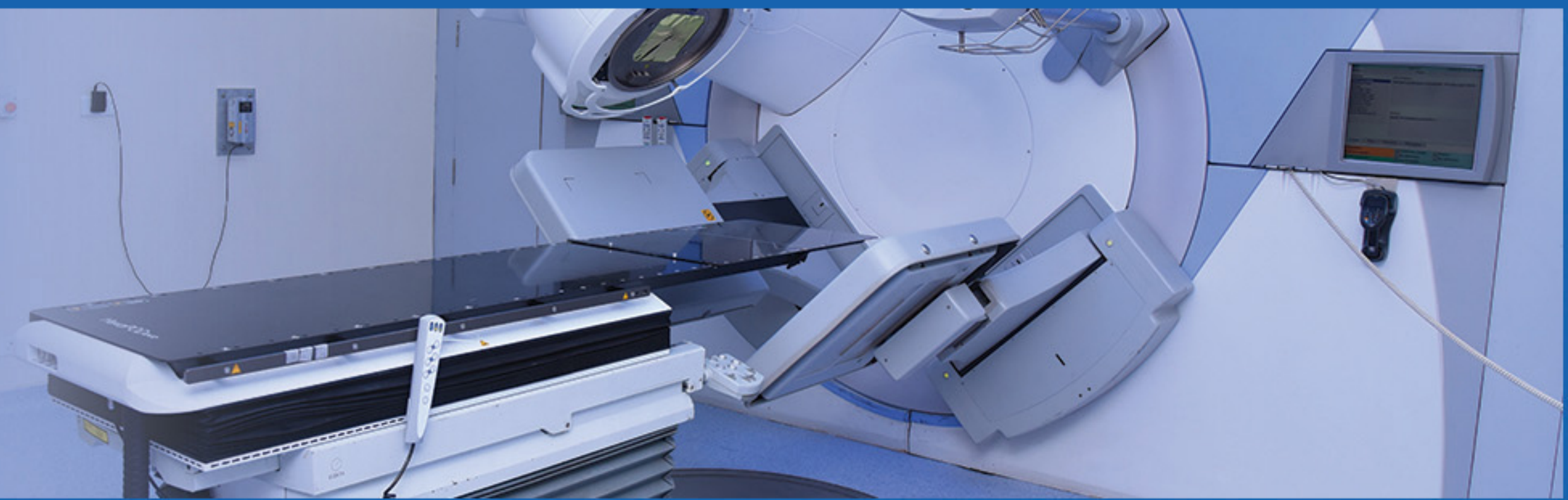
- Allogenic Bone Marrow Transplant
- Autologous Bone Marrow Transplant
- Acute Leukemia
- Sicklecell Anemia, Aplastic Anemia, Thalassemia, MDS
- Dedicated Bone Marrow Transplant Centre with 4 Class 10000 HEPA suites under dedicated Hemato Oncologist / Paediatric Oncologist supervision

- Pediatric Blood Cancers & Conditions
- Flow Cytometry
- Blood Transfusion for Hematologic Conditions
- Clinical Trials



SUCCESSFULLY COMPLETED 200+ BONE MARROW TRANSPLANTS

CENTER OF EXCELLENCE IN HIGH PRECISION RADIO THERAPY



- Triple Energy Linear Accelerators
- 40 Channel High Dose Rate Brachytherapy
- Virtual Simulation
- CT Simulation with Moving Lasers
- 3D Treatment Planning System RADIO THERAPY MODALITIES
- onventional Radiotherapy
- Intensity Modulated Radiotherapy (IMRT) 3D Conformal Radiotherapy
- Image-Guided Radiotherapy (IGRT)
- Volumetric Modulated Arc Therapy (VMAT)
- Adaptive Radiotherapy Treatment Planning System (Ray Station)
- Stereotactic Radiotherapy (SRT)
- Stereotactic Radio Surgery (SRS)
- Stereotactic Body Radiotherapy (SBRT)
- Image guided Brachytherapy (IGBT)
- Respiratory Gating Techniques

Radiation Treatment Techniques:

- 3DCRT • IMRT • VMAT • SRS • SBRT

Image-Guided Radiation Therapy (IGRT)

- EPID [2D] • IMRT [3D] • Symmetry [4D]

Respiratory Motion Management:

- ABC (Active Breathing Coordinator)
- DIBH-Cardiac Sparing Technique in Breast Techniques

Adaptive Radiotherapy:

- Deformable Registration
- Dose Tracking
- Dose wrapping
- Personalised Adaptive RT

Raysearch Planning System:

- First Photon Based Treatment Planning System in India
- Advanced Treatment Planning System with Artificial Intelligence (AI) & Machine Learning Technology (ML)

CENTER OF EXCELLENCE IN TIME OF FLIGHT PET-CT SCAN



- FDG PET-CT Scan
- PSMA PET-CT for Prostate Cancer
- Ga-DOTANOC Scan for Neuro Endocrine Tumors
- Metabolic Imaging for Epilepsy, Dementia, Parkinsonism
- Metabolic Biopsy
- Cardiac PET-CT for Viability & inflammation
- Gallium generator to perform PSMA PET

The Nuclear medicine department has been equipped with **Advantages of (TOF) PET-CT**

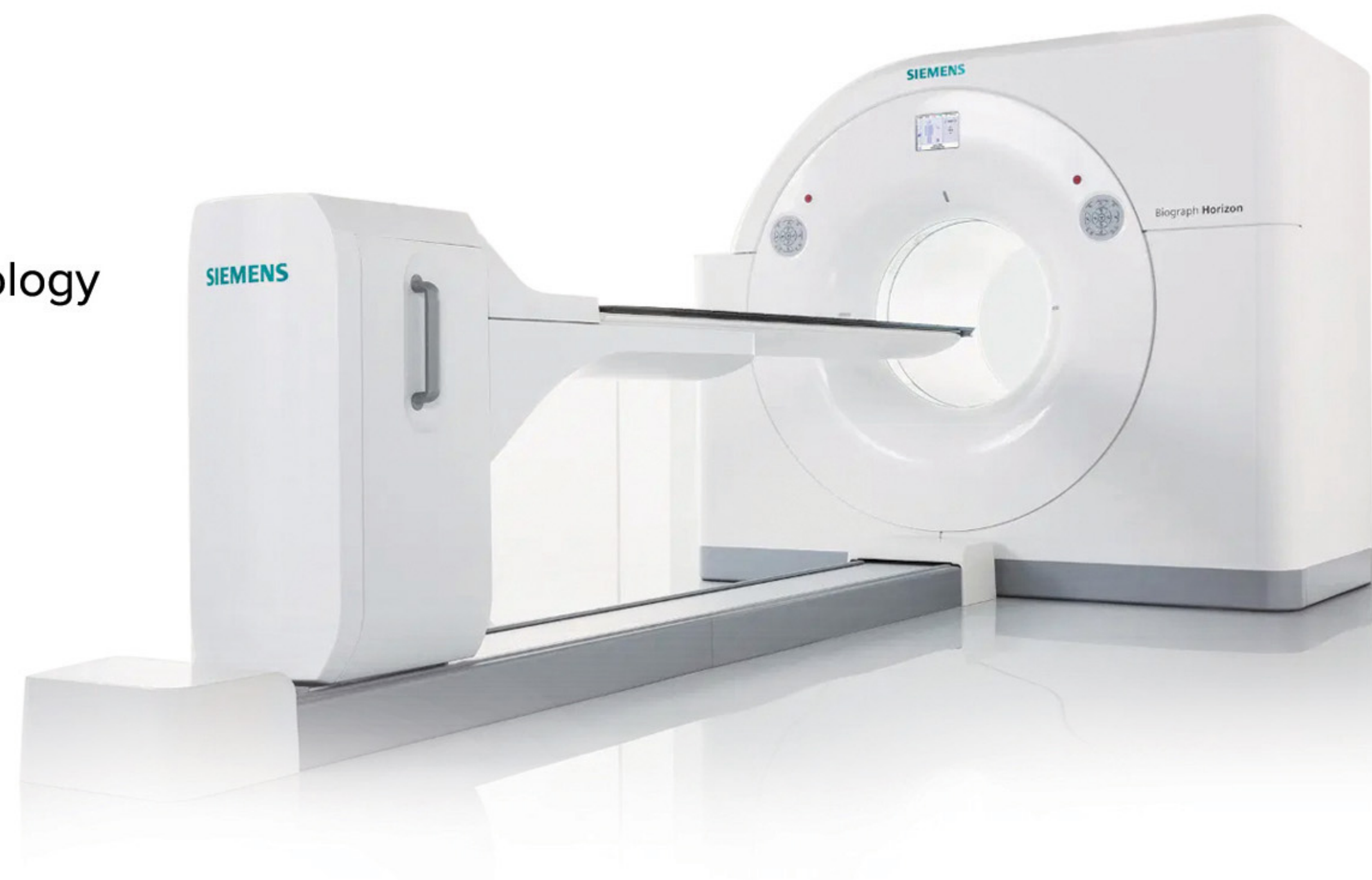
- Revolutionary unique Time-of-Flight (TOF) technology
- Fasted LSO Crystal Technology - 7.5 times faster
- Improved Image Quality
- Improved Detection of Smaller Lesions
- Faster scans with Low Dose
- Pediatric PET -CT with Low Dose Protocols
- Better image in Obese Patients
- Cardiac Viability Studies
- Metabolic Neuro Imaging

SALIENT FEATURES:

- Revolutionary unique Time of Flight (TOF) technology
- LSO Crystal Technology
- Best Image Quality
- Better Detection of Smaller Lesions
- Low Radiation dose to the Patient
- Faster Image Acquisition
- Pediatric PET-CT with Low Dose Protocols
- Better image quality in Obese Patients
- Artificial Intelligence in Neuro Imaging

OFFERING THERAPIES:

- Iodine High dose Iodine Therapy for Thyroid Cancer
- ¹⁷⁷Lu DOTATATE Therapy for Neuro Endocrine Tumor
- ¹⁷⁷Lu PSMA Therapy for Prostate Cancer
- Samarium/Lutetium EDTMP Therapy for Bone Pain Palliation
- Radiation Synovectomy
- Low Dose Radioiodine Therapy for Graves' Disease, Toxic Multinodular Goiter
- Alpha Therapy for Neuroendocrine Tumor and Prostate Cancer



CENTER OF EXCELLENCE IN PAEDIATRIC ONCOLOGY



- Dedicated Paediatric Oncology unit with qualified, trained experts
- Experience treating 1500+ Paediatric Oncology cases
- Evidence based medicine practices through Multi-disciplinary Tumor boards
- Best survival rates on par with global standards
- Successful completion of 50 number of Pediatric BMT cases
- Crossed 100 number of Paediatric cases treated with Radiotherapy, SBRT
- Dedicated Benign Hematology, Hemato Oncology (BMT) Unit
- Limb salvage surgeries for Extremity Osteosarcoma
- Extra Corporeal Radiotherapy
- Precision Medicine
- Targeted therapies
- Time of Flight PET CT, best for Pediatric age group with very low dose
- Collaborative work with various NGOs like Shreya Cancer Foundation and Aroh foundation to provide a holistic Cancer Care.
- Survivorship program to help patients and families navigate life after cancer.
- Childhood Cancer Support group program to provide emotional support to the parents of children diagnosed with Cancer
- Empanelment with all Govt. schemes, PSUs, Corporates, Insurances etc.



INSTITUTE FOR STEREOTACTIC RADIATION ONCOLOGY (ISRO)

MAKING RECOVERIES FASTER AND EASIER!



**First Cancer Hospital in Andhra Pradesh to have successfully completed
800+ Brain Tumor Cases, 200+ SRS/SRT/SBRT Cases**

MALIGNANT

- Primary CNS malignancies
- Metastatic brain and spine lesions
- Reirradiation in replaced brain tumors FUNCTIONAL
- Trigeminal neuroliga
- Refractory epilepsy
- Movement disorders

NON MALIGNANT (BENIGN)

- Acoustic neuroma
- Arteriovenous Malformations (AVMs)
- Cavernomas
- Craniopharyngioma
- Glomus tumours
- Hemangioblastoma
- Meningioma
- Pineocytomas
- Pituitary adenoma

WHY SENTINEL LYMPH NODE BIOPSY (SLNB) & INDOCYANINE GREEN (ICG)



SENTINEL LYMPH NODE

It is a technique to identify the first few lymph nodes into which tumor cells drain

- We can avoid unnecessary extensive lymph node dissection
In a single setting of surgery, we can do lymph node dissection if a positive lymph node present
- Helps in deciding adjuvant treatment
- Low morbidity (Prevent lymphedema of limbs - worst complication) so improve quality of life
- Recommended to be performed in Breast, Gynecological Malignancy
Melanoma & Penile Cancer
- Most recent development in surgical oncology
- Low false negative rate in detection of significant lymph-node

ICG (INDOCYANINE GREEN)

- For Perfusion Assessment Example: Bowel Perfusion, Flap Perfusion After Reconstruction
- It helps the surgeon in taking the proper decision during surgeries
- Lymphatic mapping and Sentinel Lymph Node Biopsy
- To identify chyle leak & lymph leak
- Safe effective & easy to practice

CHEMOTHERAPY DAY CARE CENTER



SERVING YOU THROUGHOUT VISAKHAPATNAM

Care - Courtesy - Cure

- The Only Center in Andhra Pradesh Delivered over 1,50,000+ Chemotherapy Sessions
- Accurate Dose Delivery through Infusion Pump
- Affordable charges
- Personalised care
- Delivered with empathy
- Expert team
- Immunotherapy
- Personalised Medicine
- Cutting Edge Technology
- Venous Access device
- Scalp Cooling Technology to Prevent hair loss

Scalp Cooling System

SCALP COOLING SYSTEM is the only proven technology to avoid or reduce the most feared Chemotherapy induced hair loss (Alopecia) in solid tumors such as Ovarian, Breast, Colorectal and many other. MGCH&RI is the First hospital in the state of Andhra Pradesh to introduce this facility. The rate of hair retention by using this scalp cooling system vary from patient to patient and dependent upon the chemotherapy regimen. It is important for patients to continue with scalp cooling at each chemotherapy session to get the full benefit and without any increased risk of getting cancer back.



iBreastExam

iBreast is an advanced imaging system designed for the early detection of breast abnormalities. Utilizing high-resolution imaging and sophisticated algorithms, iBreast provides a detailed view of breast tissue, enabling our specialists to detect potential issues with greater accuracy than traditional methods.

VEL Scope

VELscope is a state-of-the-art, non-invasive screening device that uses natural tissue fluorescence to detect changes in the oral mucosa. This advanced technology allows our specialists to visualize abnormalities that may not be visible to the naked eye, significantly enhancing our ability to detect oral cancer at its earliest stages.



Smart Scope

Our Smart Scope offers a digital cervical exam with immediate results, no electricity needed, ensuring quick and reliable care.

POST GRADUATE TEACHING & TRAINING IN ONCOLOGY



Mahatma Gandhi Cancer Hospital and Research Institute is authorized by the National Board of Examination (NBE), New Delhi for the following DNB programmes to provide super specialty/broad specialty courses to the Post Graduate /Graduate doctors. MGCH&RI's quality of academic programmes has achieved high acclaim from both the academic fraternity and the medical community and is choice campus of most doctors with high ranks in the eligibility examinations by NBE. We are the only hospital having all major cancer care related departments in this region. In fact this hospital has the highest number of qualified cancer specialists working full time under one roof and they have the credentials of coming from all premier oncology education institutions of India like Cancer Institute (Adyar), Tata Memorial Hospital (Mumbai), Christian Medical College (Vellore), & AIIMS (Delhi) etc. It is the largest teaching cancer hospital serving this region since 20 years and treated over 2,00,000 cancer patients

We are accredited with National Board of Examination

Courses available are:

1) DrNB Super Specialty

S.No	Name of the Course	Eligibility	Duration
1.	DrNB Surgical Oncology	MS Gen. Surg.	3 Yrs
2.	DrNB Medical Oncology	MD Gen. Medicine, Pediatric Radiation Therapy	3 Yrs

2) DNB Radiation Oncology

S.No	Name of the Course	Eligibility	Duration
1.	DNB Radiation Oncology	MBBS	3 Yrs

3) Fellowship Program

MGCH&RI is Recognized by Dr. YSR UHS, Vijayawada to conduct Post Doctoral Fellowship (PDF) Course in Pain & Palliative Care.

Available Course: Post Doctoral Fellowship (Pain & Palliative Care)

RADIOLOGY AND IMAGING

- 3D Mammography
- Tomosynthesis
- Stereotactic Biopsy
- Vacuum assisted Biopsy Digital X Ray
- 32 Slice CT scanner
- Ultrasound with Color Doppler
- Computerized Radiography

LABS

- Fully Automated Biochemistry
- Hematology Analyzer
- Enhanced Chemiluminisence for serology
- Molecular Diagnostics
- Oncopathology
- Frozen Section Facility
- Digital Colposcopy

WHY MGCH & RI

- 20+ years of cancer care excellence with patient centric approach
- Largest conglomerate of 25+ Oncologists from premier institutes
- Cutting edge contemporary technologies on par with Best Cancer Centers in the world
- Evidence based clinical pathways with multi-disciplinary Tumor Boards
- Largest & Most Trusted Cancer Hospital in this region
- Dedicated Hematopoietic Stem cell Transplant Unit, Robotic Surgery, Adaptive Radiotherapy & Time of Flight PETCT, Pediatric Oncology unit.
- Only centre for Neuroendocrine imaging and treatment.
- Services from prevention through treatment to Palliative terminal care.
- Teaching institute accredited with DNB for super specialty Surgical, Medical & Radiation Oncology and Pain & Palliative care.
- Centre of excellence for the treatment of all types of cancer.
- Successfully completed 400+ Robotic Surgeries, 200+ Bone Marrow Transplants and 800+ cases of Brain Tumor treatments.
- Fully equipped screening bus for rural outreach and early detection of cancer as social responsibility.

SUPPORT SERVICES

- Laboratory services
- Stoma Care
- Ambulance Services
- Dietary Services
- De-Addiction Clinic
- Psycho Social Counseling
- Rehabilitation Services
- Cancer Screening Clinic
- Pain Clinic
- Palliative Care
- Home Care
- Alternative Medicine Preventive Oncology
- Mobile Screening Vehicle
- Telemedicine



ACHIEVEMENTS

- Treated Over: 2,00,000+ Patients
- 20,000+ Complex Onco-Surgeries
- 30,000+ Radiotherapies
- 1,50,000+ Chemotherapy Sessions
- 20,000+ Brachy Therapies
- 400+ Robotic Surgeries
- 200+ BMT Procedures
- 200+ SRS/SBRT/SRT
- 800+ Brain Tumor Cases
- 1500+ Paediatric Oncology Cases
- Super Speciality Teaching Institute in Oncology

WE HAVE TURNED AROUND LIVES OF OVER 2,00,000 CANCER PATIENTS

Mahatma Gandhi Institute of Oncology, Jharsuguda



Agreement Signed for
**DEVELOPING CANCER CARE
SUPER SPECIALITY HOSPITAL
IN JHARSUGUDA, ODISHA THROUGH PPP
MODE**

in the presence of
Hon'ble Chief Minister of Odisha

120 Bedded Cancer-Care Super Speciality Hospital at Jharsuguda, Odisha

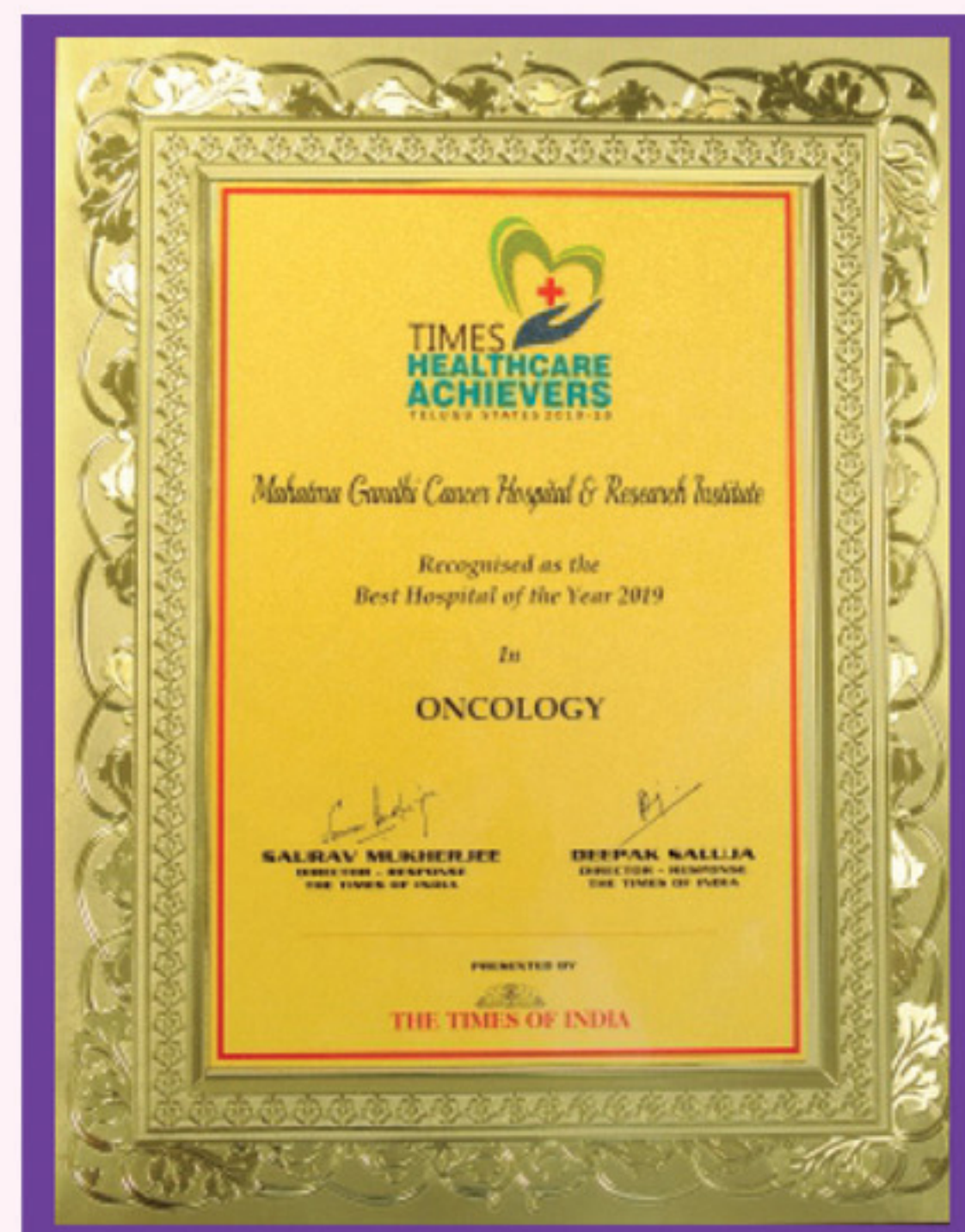
SETTING A BENCHMARK OF EXCELLENCE WITH AWARDS & ACCREDITATIONS

Mahatma Gandhi Cancer Hospital & Research Institute, Visakhapatnam has been awarded the highest honor in the social sphere **“The Mahatma Award”** for social Good in Cancer Care to recognized distinguished services of high order in the field of Oncology as a **CHANGE MAKER & IMPACT LEADER** for our excellent ethical work.



Mahatma Gandhi Cancer Hospital & Research Institute was recognized in 2018 by NTR-Vaidya Seva Trust (currently known as Aarogysree trust) & Government of Andhra Pradesh for being the **BEST PERFORMING RADIOTHERAPY FACILITY** in the state in providing exceptional services and quality care in Radiotherapy

Recognized by **NTR Vaidyaseva Trust (Govt of Andhra Pradesh)** for having the best **'RADIATION ONCOLOGY'** facilities in the State.



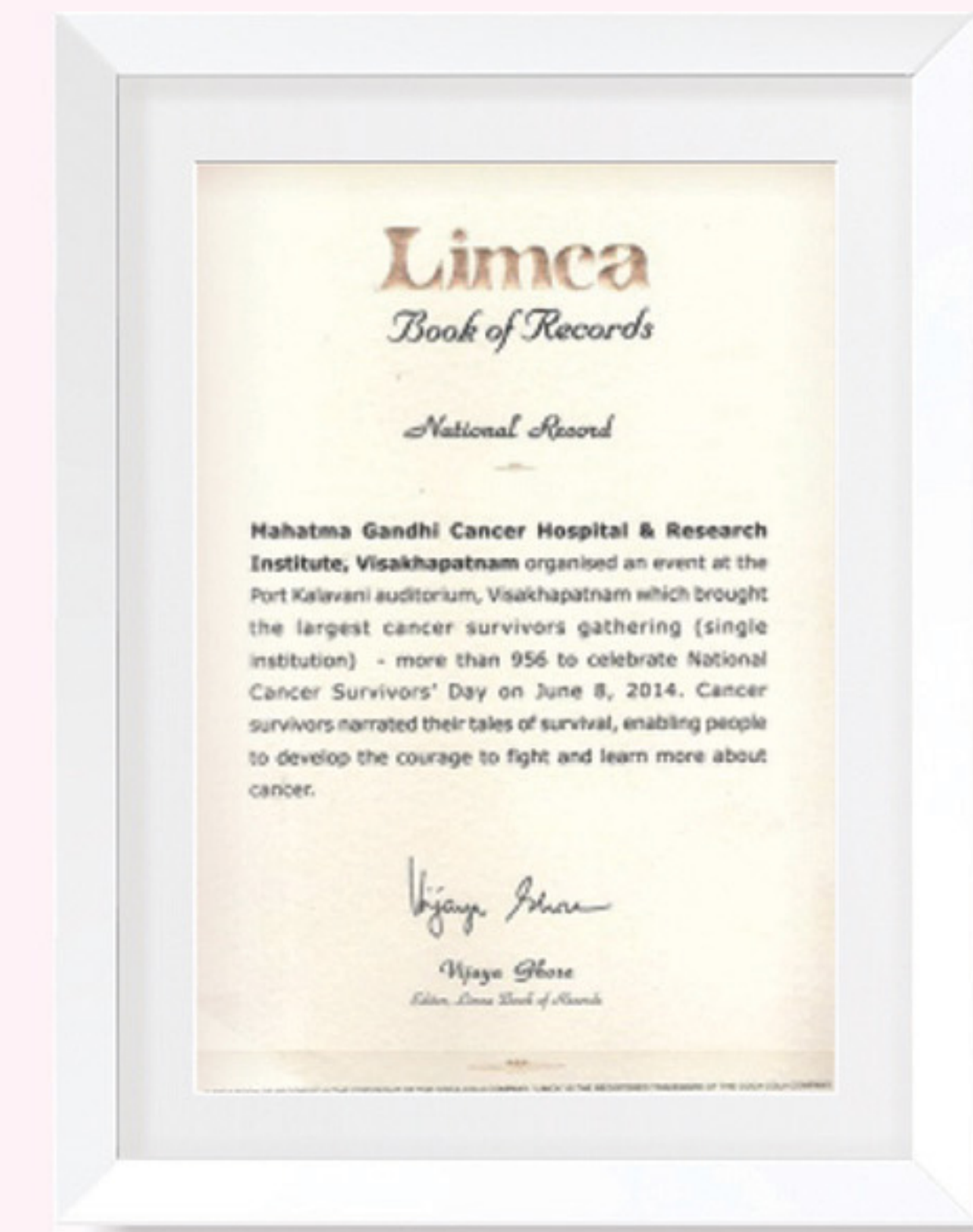
Mahatma Gandhi Cancer Hospital & Research Institute was recognized as **THE BEST CANCER HOSPITAL** in the State of Andhra Pradesh at the **Times Healthcare Achievers Awards-2018 & 2019**



Mahatma Gandhi Cancer Hospital & Research Institute was recognized as **THE MOST TRUSTED CANCER HOSPITAL** in the State of Andhra Pradesh at the **Times Business Awards - 2020**.

Mahatma Gandhi Cancer Hospital & Research Institute has been accredited by NABH indicating the high standards of patient care and patient safety. This accreditation will benefit stake holders by ensuring high quality of care and patient safety. The hospital has earned recognition such as:

Limca Book of Records - 2015 edition for LARGEST CANCER SURVIVORS GATHERING (single institution)



Mahatma Gandhi Cancer Hospital & Research Institute was recognized in 2019 by **“THE HANS INDIA”** as **“RETAIL RATNA AWARD”** for the category to “Health Care” for treating a huge number of cancer patients for 14 years.



In 2019, Mahatma Gandhi Cancer Hospital & Research Institute was recognized as an “Energy Efficient Hospital at the **CII 20TH NATIONAL AWARDS FOR EXCELLENCE IN ENERGY MANAGEMENT”** as one of the top 3 energy efficient hospitals in the country for new interventions in Energy Management.



Mahatma Gandhi Cancer Hospital & Research Institute has been awarded with the **Times Health Excellence Award - 2021 in Service Excellence in Oncology** Category for the third time consecutively.



1st Position Among High Footfall with Good Patient Feedback Under BSKY for receiving The Chief Minister’s Award as The Best Cancer Hospital in this region from the Govt of Odisha for providing the ultimate Cancer-Care as we provide treatment to a large number of beneficiaries under Odisha’s BSKY healthcare programme.



Mahatma Gandhi Cancer Hospital & Research Institute

Palasa, Tekkali, Narasannapeta
Ph: 7995079915

Srikakulam/Rajam
Ph: 7207992101

Vizianagaram
Ph: 7995079914

Bobbili, Parvathipuram
Ph: 7995079913

**Visakhapatnam
Steel Plant**
Ph: 7386901442

Gayatri Vidya Parishad
Ph: 7995079915

Anil Neerukonda Hospital
Ph: 9885824383

Narsipatanam/ Anakapalle /Gajuwaka
Ph: 7330777346

Kakinada
Ph: 7075899903

Rajahmundry
Ph: 7330773302

Bhimavaram
Ph: 7075899903

Berhampur
Ph: 8374454521, 9861219219

Koraput
Ph: 8374454561, 9861219219

Jharsuguda
Ph: 8249157535, 9861219219

Bhawanipatna
Ph: 9100446813, 9861219219

Jagdalpur
Ph: 9154349682, 9861219219



Ph: 0891- 2878787

+91-8341033744

www.mgcancerhospital.com

Accredited with



f /mgcancerhospital

X @MG_Cancer

ig /mgcancerhospital